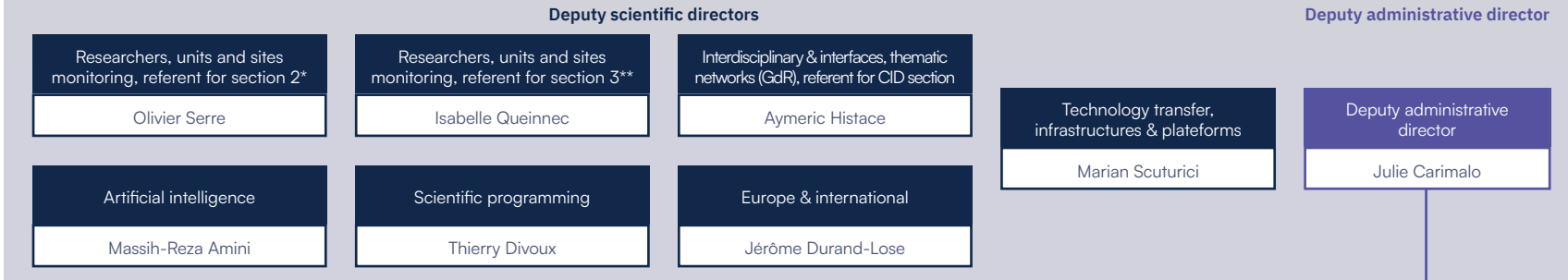


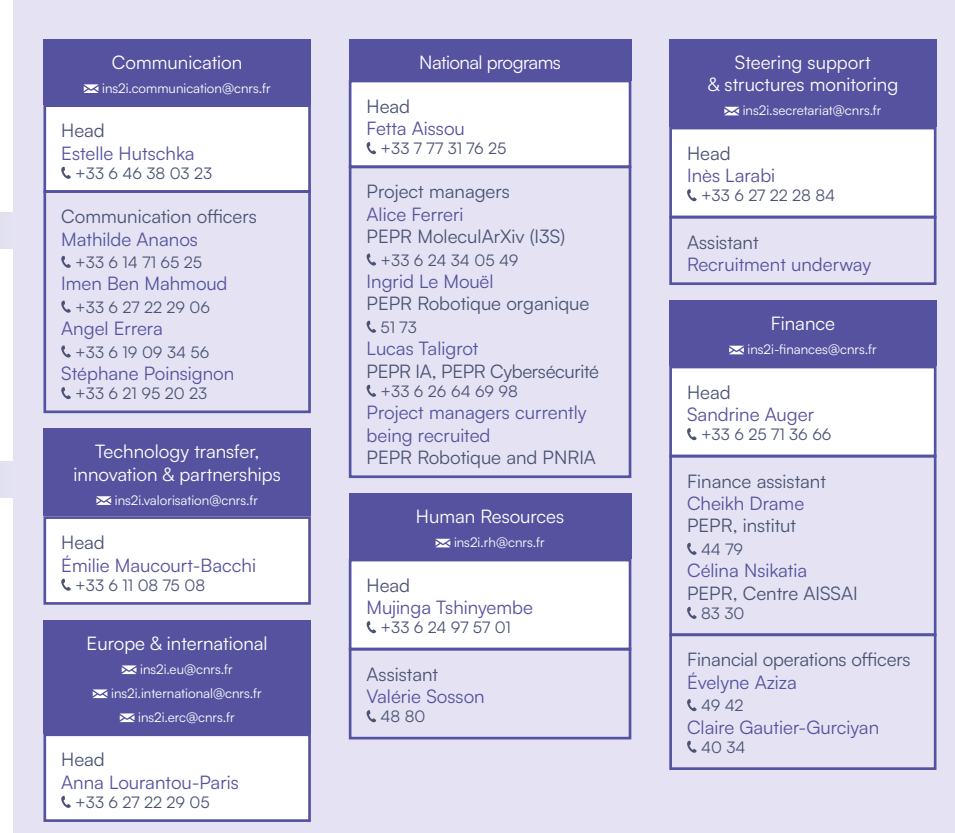
EXECUTIVE TEAM



SCIENTIFIC TEAM



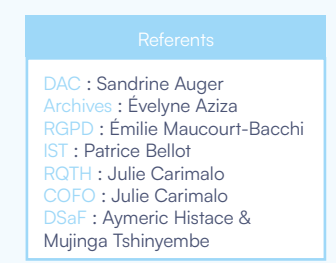
ADMINISTRATIVE TEAM



TRANSVERSAL MISSIONS



Full composition of transversal missions teams on the next page



GDR: Research groups
 CID: Interdisciplinary commissions
 CQI: Continuous quality improvement
 GDPR: General Data Protection Regulation
 IST: Scientific and technical information
 RQTH: Recognition as a disabled worker
 COFO: Referent for individual professional training
 DSaF: Scientific referent for trainings

* Section 2: « Computer Sciences: foundations of computer science, computation, algorithms, representations, operations »
 ** Section 3: « Computer Sciences: signals, images, languages, automatic control, robotics, interactions, hardware/software integrated systems »

TRANSVERSAL MISSIONS

Computing

Marian Scuturici (coordinator)

Massih-Reza Amini
 Alfredo Buttari (PEPR NumPEX)***
 Pierre-François Lavallée (IDRIS)***
 Denis Veynante (DDOR)***

Cybersecurity

Jérôme Durand-Lose (coordinator)

Lucas Taligrot
 Sonia Ben Mokhtar (PEPR Cybersécurité)***
 Caroline Fontaine (GDR Sécurité informatique)***
 Jean-Yves Marion (Campus Cyber)***
 Nicolas Porquet (Campus Cyber)***

Artificial intelligence

✉ ins2i-cellule-ia@cnrs.fr

Massih-Reza Amini (coordinator and PEPR IA)

Fetta Aïssou
 Gérald Dherbomez
 Jalal Fadili
 Lucas Taligrot
 Olivier Cappé (Choose France)***
 Vincent Folliard (AISSAI center)***

Robotics

Sébastien Briot (coordinator)

Gérald Dherbomez
 Ingrid Le Mouël
 Émilie Maucourt-Bacchi
 Isabelle Queinnec
 Marian Scuturici
 Nicolas Andreff (GDR robotique)***
 Isabelle Fantoni (GDR robotique)***
 Philippe Fraise (PEPR O2R)***
 Jean-François Kong (TIRREX, RobotEx2.0)***
 Nicolas Marchand (TIRREX, RobotEx2.0)***
 François Marmouit (2RM)***
 Véronique Ribière (CNRS - DRE)***
 Philippe Souères (PEPR Robotique)***

Sustainable development

✉ ins2i-dd@cnrs.fr

Julie Carimalo (coordinator)
 Aymeric Histace (coordinator)

Imen Ben Mahmoud
 Nabil El-Korso
 Mohand-Saïd Hacid
 Inès Larabi
 Céline Nsikatia
 Olivier Serre

Science outreach

✉ ins2i-mediation@cnrs.fr

Marian Scuturici (coordinator)

Estelle Hutschka
 Olivier Serre

Gender parity and equality

✉ ins2i-cellule-egalite@cnrs.fr

Anne Siegel (coordinator)

Mathilde Ananos
 Patrick Baillot
 Estelle Hutschka
 Clémence Magnien
 Barbara Nicolas
 Isabelle Queinnec
 Olivier Serre
 Mujinga Tshinyembe

*** External staff supporting the CNRS informatics team on transverse missions