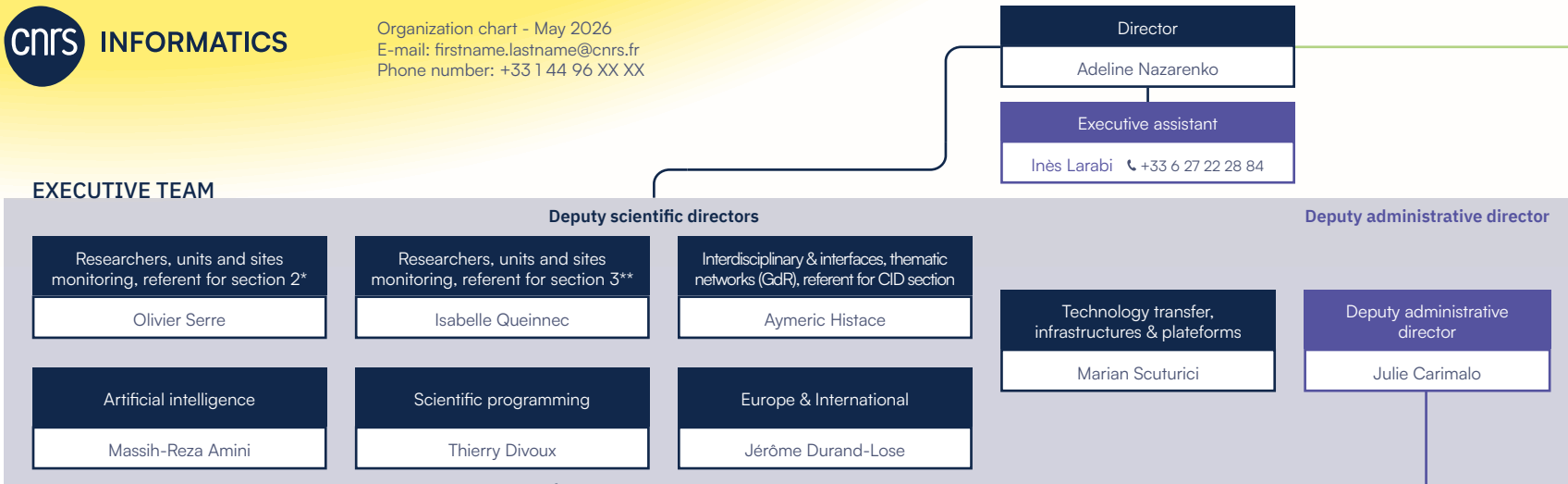


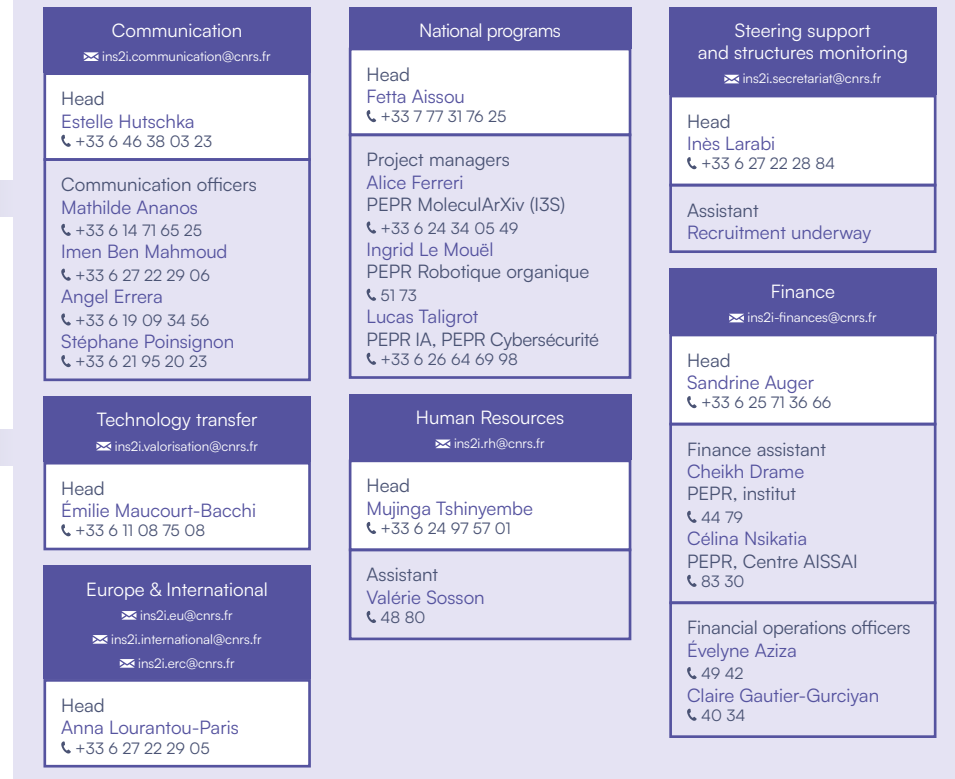
EXECUTIVE TEAM



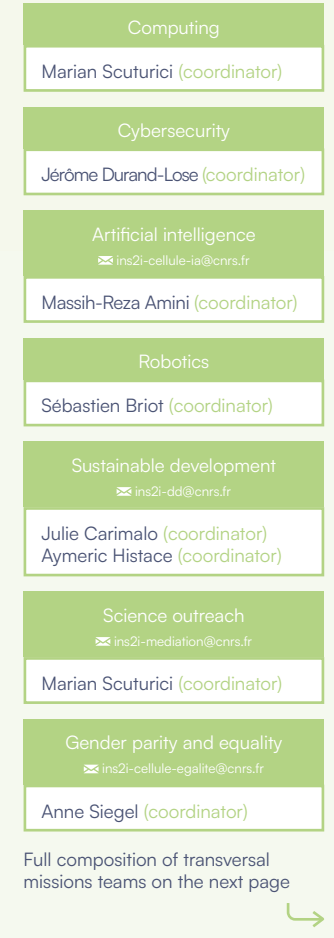
SCIENTIFIC TEAM



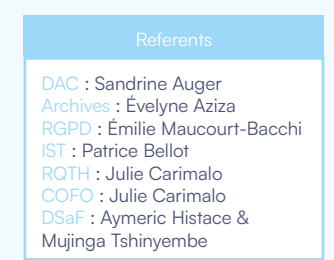
ADMINISTRATIVE TEAM



TRANSVERSAL MISSIONS



Full composition of transversal missions teams on the next page



GDR: Research groups
 CID: Interdisciplinary commissions
 CQI: Continuous quality improvement
 GDPR: General Data Protection Regulation
 IST: Scientific and technical information
 RQTH: Recognition as a disabled worker
 COFO: Referent for individual professional training
 DSaF: Scientific referent for trainings

* Section 2: « Computer Sciences: foundations of computer science, computation, algorithms, representations, operations »
 ** Section 3: « Computer Sciences: signals, images, languages, automatic control, robotics, interactions, hardware/software integrated systems »

TRANSVERSAL MISSIONS

Computing

Marian Scuturici (coordinator)

Massih-Reza Amini
Alfredo Buttari (PEPR NumPEX)***
Pierre-François Lavallée (IDRIS)***
Denis Veynante (DDOR)***

Cybersecurity

Jérôme Durand-Lose (coordinator)

Lucas Taligrot
Sonia Ben Mokhtar (PEPR Cybersécurité)***
Caroline Fontaine (GDR Sécurité informatique)***
Jean-Yves Marion (Campus Cyber)***
Nicolas Porquet (Campus Cyber)***

Artificial intelligence

✉ ins2i-cellule-ia@cnrs.fr

Massih-Reza Amini (coordinator and PEPR IA)

Fetta Aïssou
Gérald Dherbomez
Jalal Fadili
Lucas Taligrot
Olivier Cappé (Choose France)***
Vincent Folliard (AISSAI center)***

Robotics

Sébastien Briot (coordinator)

Gérald Dherbomez
Ingrid Le Mouël
Émilie Maucourt-Bacchi
Isabelle Queinnec
Marian Scuturici
Nicolas Andreff (GDR robotique)***
Isabelle Fantoni (GDR robotique)***
Philippe Fraisse (PEPR O2R)***
Jean-François Kong (TIRREX, RobotEx2.0)***
Nicolas Marchand (TIRREX, RobotEx2.0)***
François Marmoiton (2RM)***
Véronique Ribière (CNRS - DRE)***
Philippe Souères (PEPR Robotique)***

Sustainable development

✉ ins2i-dd@cnrs.fr

Julie Carimalo (coordinator)
Aymeric Histace (coordinator)

Imen Ben Mahmoud
Nabil El-Korso
Mohand-Saïd Hacid
Inès Larabi
Céline Nsikatia
Olivier Serre

Science outreach

✉ ins2i-mediation@cnrs.fr

Marian Scuturici (coordinator)

Estelle Hutschka
Olivier Serre

Gender parity and equality

✉ ins2i-cellule-egalite@cnrs.fr

Anne Siegel (coordinator)

Mathilde Ananos
Patrick Baillot
Estelle Hutschka
Clémence Magnien
Barbara Nicolas
Isabelle Queinnec
Olivier Serre

*** External staff supporting the CNRS informatics team on transverse missions