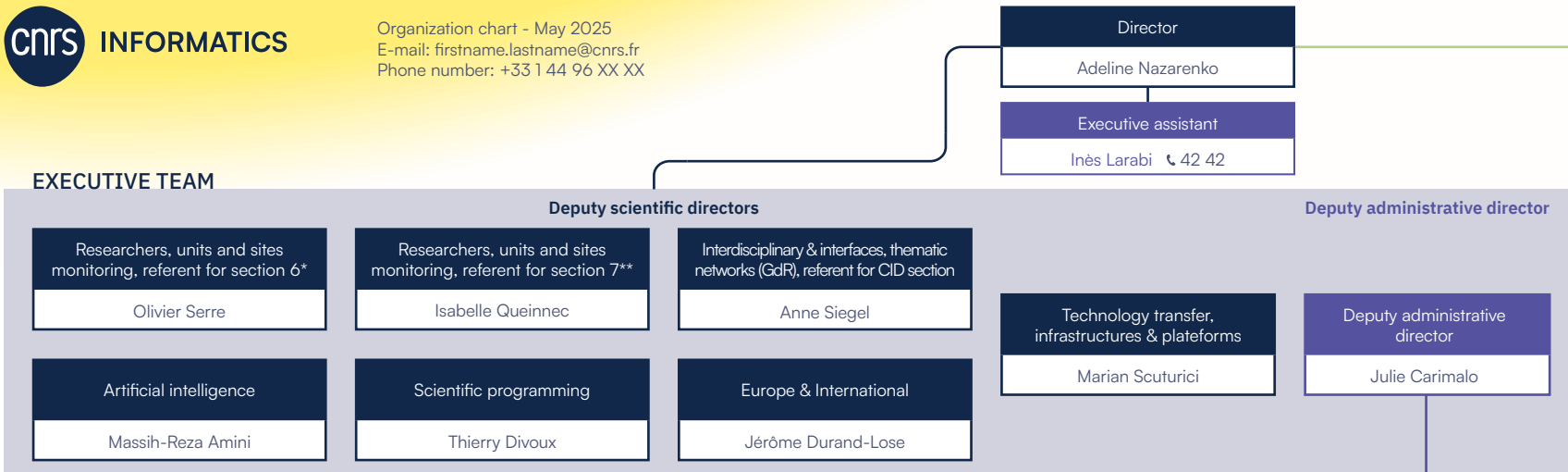


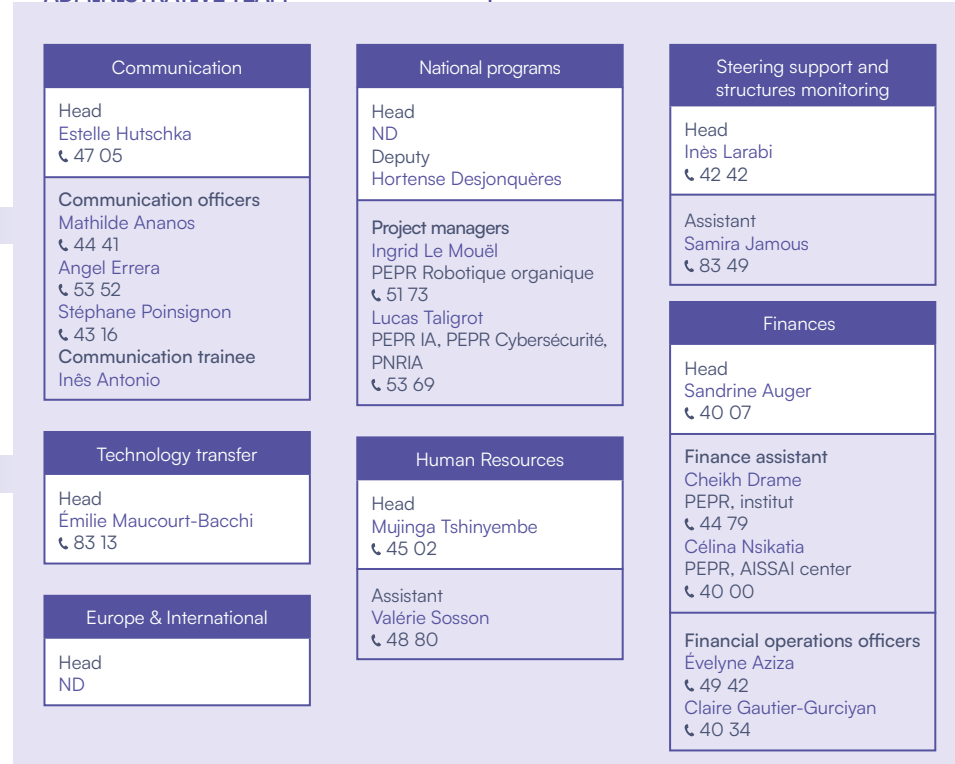
EXECUTIVE TEAM



SCIENTIFIC TEAM



ADMINISTRATIVE TEAM



TRANSVERSAL MISSIONS

- Computing**
 - Marian Scuturici (coordinator)
 - Massih-Reza Amini
 - Michaël (PEPR NumPEX)***
 - Pierre-François Lavallée (IDRIS)***
 - Denis Veynante (DDOR)***
- Cybersecurity**
 - Jérôme Durand-Lose (coordinator)
 - Lucas Taligrot
 - Sonia Ben Mokhtar (PEPR Cybersécurité)***
 - Caroline Fontaine (GDR Sécurité informatique)***
 - Jean-Yves Marion (Campus Cyber)***
 - Nicolas Porquet (Campus Cyber)***
- Artificial intelligence**
 - Massih-Reza Amini (coordinator)
 - Hortense Desjonquères
 - Gérald Dherbomez
 - Jalal Fadili
 - Jamal Atif (PEPR IA)***
 - Olivier Cappé (Choose France)***
 - Vincent Folliard (AISSAI center)***
- Sustainable development**
 - Julie Carimalo (coordinator)
 - Aymeric Histace (coordinator)
 - Inès Antonio
 - Sandrine Auger
 - Mohand-Saïd Hacid
 - Estelle Hutschka
 - Inès Larabi
 - Olivier Serre
- Science outreach**
 - Marian Scuturici (coordinator)
 - Julie Carimalo
 - Estelle Hutschka
 - Olivier Serre
- Gender parity and equality**
 - Anne Siegel (coordinator)
 - Mathilde Ananos
 - Patrick Baillo
 - Pierre Chainais
 - Estelle Hutschka
 - Clémence Magnien
 - Isabelle Queinnec
 - Olivier Serre

- Referents**
- CQI, GDPR: Sandrine Auger
 - Archives: Évelyne Aziza
 - IST: Patrice Bellot
 - RQTH: Julie Carimalo
 - COFO: Mujinga Tshinyembe
 - CMFI: Anne Siegel

* Section 6: « Information Sciences: foundations of computer science, computation, algorithms, representations, operations »
 ** Section 7: « Information Sciences: signals, images, languages, automatic control, robotics, interactions, hardware/software integrated systems »
 *** External staff supporting the CNRS informatics team on transverse missions

GDR: Research groups
 CID: Interdisciplinary commissions
 CQI: Continuous quality improvement
 GDPR: General Data Protection Regulation
 IST: Scientific and technical information
 RQTH: Recognition as a disabled worker
 COFO: Referent for individual professional training
 CMFI: Referent for national trainings